

# Message from the Board

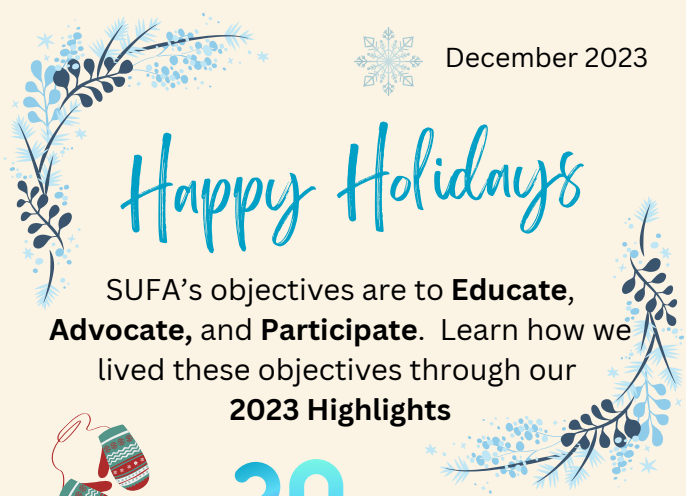
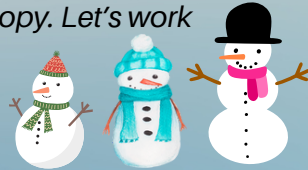


The Sunnyvale Urban Forest Advocates (SUFA) has so much to celebrate this holiday season. We had an eventful year with many "firsts". We had our first presentation about our urban forest at the Sunnyvale Senior Center, followed by the first tree walk at the Sunnyvale Community Center. It was great to see many participants eager to learn about our common and distinctive city trees. We also had our first family-friendly tree walk for ages 5-10 - which was a blast! There were child-focused activities all along the way. Families were encouraged to spend more time with nature, and appreciate, care and protect the magnificent trees we have in various Sunnyvale Parks!

Thank you for supporting us in our events! Special thank you to our passionate volunteers - who allow SUFA's work to grow and take root!

As we look ahead to 2024, we are asking for your continued support. SUFA is here to ensure the momentum continues to grow to preserve and expand our tree canopy. Let's work together to care for our beautiful trees.

Enjoy the winter season!



# Happy Holidays

SUFA's objectives are to **Educate, Advocate, and Participate**. Learn how we lived these objectives through our **2023 Highlights**



20

Educational Opportunities

8

Advocacy Engagements

2

Participation Opportunities

9

Years of being the voice for the trees

**Educational opportunities!** SUFA organized 11 tree walks. A tree walk is a great way to learn about the importance and benefits of trees, and how we can help care for them. We had our inaugural family-friendly tree walk at Serra Park. We also had the edible tree walk and learned about edible trees and bushes.



We joined Fremont and Homestead High Schools, as well as the Sunnyvale Library for their Earth Day celebrations by sharing how trees help fight climate change. SUFA presented at the Sunnyvale Senior Center and Livable Sunnyvale and rallied participants to support SUFA in the care and preservation of our urban forest. We published 4 newsletters (Spring, Summer, Fall & Winter) that provided news, tips, & updates relating to SUFA's work in the community.



Top: Family-friendly tree walk  
Middle: Tabling at Homestead High School  
Bottom: Presentation at the Sunnyvale Senior Center

**Advocacy Engagements** to council members resulted in approved funding for the study issue "Street Tree Repopulation with an Equity Lens". We also reached out to the Parks and Rec Commission in support of the Cherry Chase Natural Areas project. To ensure study issues and tree concerns are implemented, SUFA will remain active in writing and meeting with council members as well as speaking at council meetings.

**Participation Opportunities.** As part of our community outreach, SUFA participated in the tree planting of five crepe myrtles at Cupertino Middle School and ten flowering cherry trees at Braly Park, to celebrate the City's Arbor Day.



Tree planting at Braly Park

Visit [sunnyvaletrees.org](http://sunnyvaletrees.org) to check out new tree walk maps and photos of trees.

